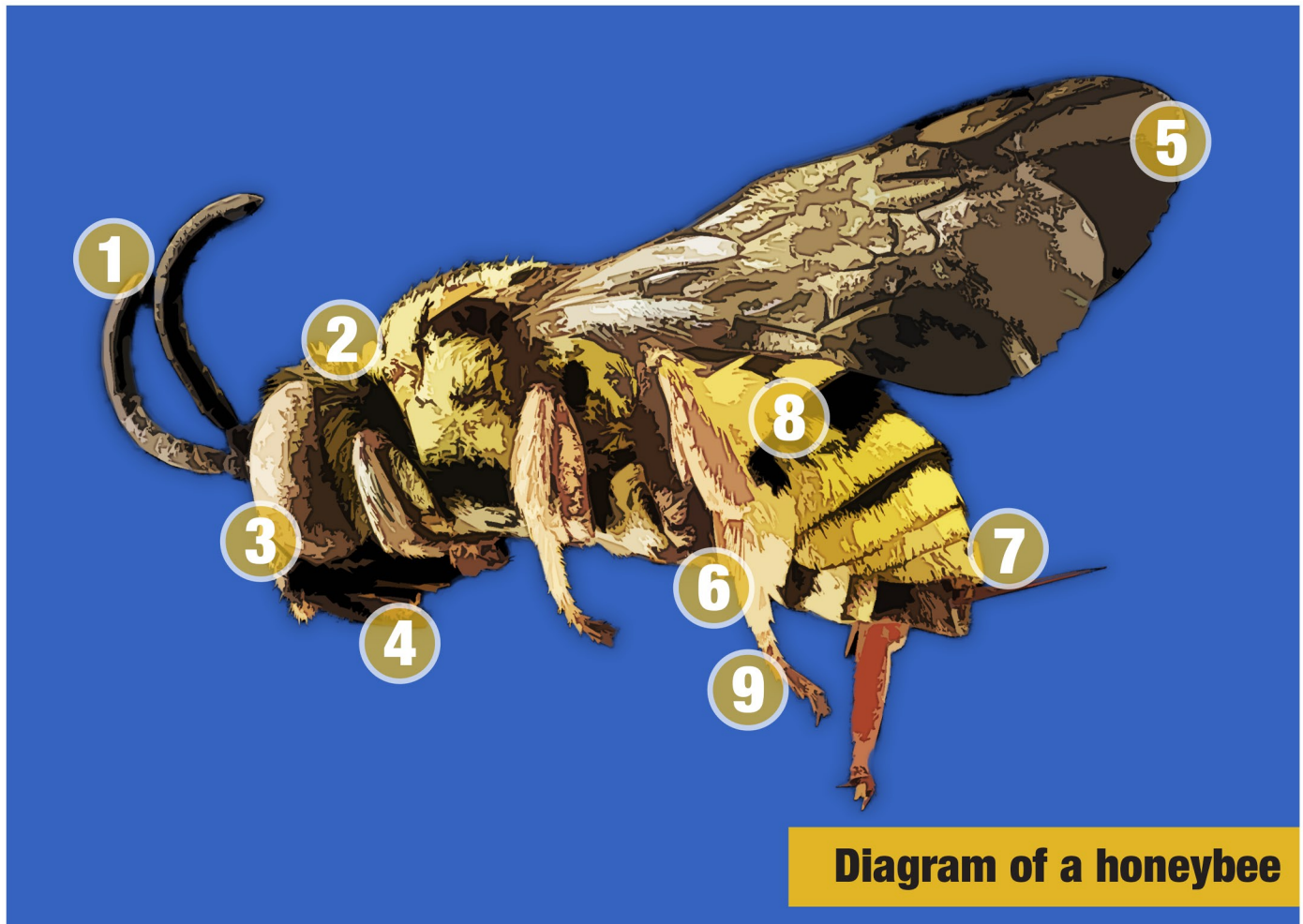




Bees What bees are made of



Let's take a closer look at a honeybee. What are its main body parts and what do they do?
Match the descriptions to the numbers to find out.



1. Antenna

An *antenna* is a long, thin sensor on a bee's head. Bees have two *antennae* (plural) which help them to find flowers by sensing strong smells. Antennae also tell the bee how fast it is flying.

2. Head

A bee's head contains the eyes, antennae and mouth.

3. Eye

Bees have two types of eye – *simple eyes* and *compound eyes*. Their three simple eyes tell them how much daylight there is. Their two compound eyes tell them about colour, light and direction.



Bees What bees are made of



4. Proboscis

A *proboscis* is a bee's tongue. Bees use their long *probosces* (plural) to drink nectar from flowers, as well as honey and water.

5. Wing

Bees have four wings which help them to fly. A bee's wing can also be used as fans to cool the hive and to dry honey.

6. Leg

A bee's legs enable it to walk and move around. Each leg is covered with special hairs which attract and carry pollen. Bees have six legs like all insects.

7. Sting

Bees' stings are their defensive weapons! When a bee is under attack, it will use its sting to 'sting' the attacker and squirt poison into them. A honeybee will only use its sting in an emergency because it will die after using it.

8. Abdomen

The abdomen is the body of a bee. Bees' abdomens are divided into seven segments and contains their reproductive organs.

9. Pollen basket

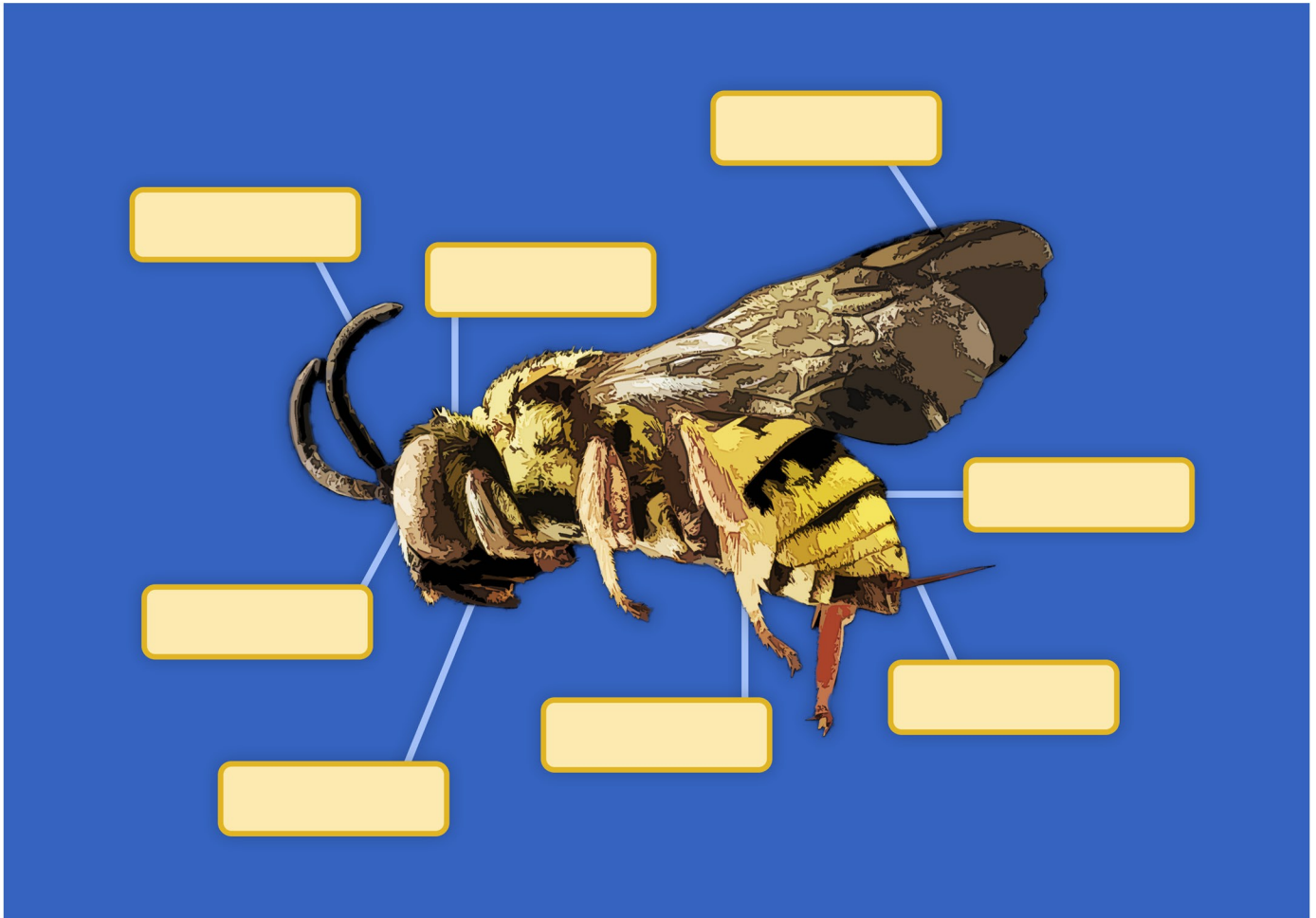
Pollen baskets are made from special hairs on a bee's legs. The hairs stick together to make a little holder to carry pollen.



Bees

What bees are made of

Now see if you can remember what the different parts of the bee are called! Write the correct words in the empty boxes to complete the diagram.



abdomen - antenna - eye - head
leg - proboscis - sting - wing



Bees What bees are made of ANSWERS

